

SHAHEED BHAGAT SINGH SR SEC SCHOOL (JHAMOLA)



COMPLETE DAY BOARDING SCHOOL CLASS 9th TO 12th



**COMPLETE DAY BOARDING SCHOOL
NEET / JEE COUCHING, LIBRARY, Special test series, PW module .**



SPECIAL NEET AND JEE MODULE of PW

SMART CLASS ROOM



Special books, course , test series design to crack jee & neet , olympiad

Regular test series of board neet and jee



LIBRARY WITH INTERNET FACILITY

1 acre Playground



SPECIAL AI AND CURRICULUM LEARNING COURSE WITH LAB

SPECIAL PARENT APPLICATION For transparency



Expert faculty to make your journey easy

Complete camera surveillance campus



25 Years of excellence

Game with dedicated coach



Contact Us
7988762959



**CONTACT FOR FEES DETAIL
CLASS YEAR SCHEDULE / FEES I**



©SHAHEEDBHAGATSINGHSRSEC.SCHOOL





SHAHEED BHAGAT SINGH SR SEC SCHOOL (JHAMOLA)

SCHOOL FACILITIES FOR 9 TO 12TH

- JEE AND NEET COACHING FOR CLASS 9TH TO 12TH
- SPECIAL TEST SERIES FOR NEET & JEE ASPIRANTS(PW) (worth 50k)
- Library Facility with laptop
- PHYSICS , CHEMISTRY ,BIOLOGY LAB
- SMART CLASSROOM
- COMPUTER LAB
- COMPLETE DETAIL CURRICULUM WITH 4 YEAR PLAN
- SPECIAL PARENT APPLICATION TO TRACK RESULT
- ALL Expert FACULTY MEMBER .
- AI AND ROBOTICS CURRICULUM LAB
- 1 ACRE PLAYGROUND
- Special Couch for Game

- 25 Years Excellence



FEATURES OF SCHOOL PARENT APPLICATION

Our parent application give complete transparency to parent about there child . IT help to fill the gap between parents and school. It gives complete report of your child on your phone

**Mittsure parent app - sample username -MIT3030266
PASSWORD - E5F7XZHN**

- 1 Lesson Plan (Teachers)
- 2 Attendance report
- 3 Test report /Exam report
- 4 Online classes and exam facility
- 5 **DAILY HOMEWORK REPORT**
- 6 *Digital lecture of complete syllabus*



FEATURES OF SCHOOL PARENT APPLICATION

7

School Calender

11

SOS Panic Button

8

Feedback and complaint
(Direct to Principal)

12

Fees report

9

Photot gallery

13

Time Table

10

Easy to use

14

Digital Content

App name

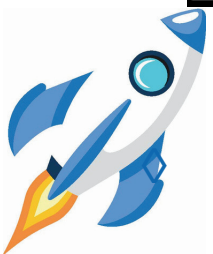
Mittsure parent app - sample

username -MIT3030266

PASSWORD - E5F7XZHN

Scan QR code to download

&TAP TO DOWNLOAD



PRINCIPAL MESSAGE



I.S.NARWAL

A school plays a crucial role in shaping a child's future. Not only does this include the provision of education and ensuring learning, but moulding the character, morals, and value system of the child as well. A school provides the foundation needed to view the world as a limitless space providing innumerable opportunities to shine.

We, at SBS, strive to provide education that explores, challenges, and grooms every aspect of the child's personality. While we are determined to provide seamless learning targeted towards excellent academic performance through the incorporation of the latest teaching approaches, we also ensure that we are actively working on the physical, social, emotional, and spiritual training of our children. We believe that all children can learn and commit to nurturing the potential in each child. We focus on contextual learning based on a constructivist theory of teaching & learning to provide techniques such as problem-solving, learning by doing & inquiry-based learning activities. Our teachers help students to test their ideas, draw conclusions & inferences in a collaborative learning environment which transforms the students to become active participants in the learning process.

Our teachers are professionally equipped to develop adapt and modify curriculum content, pedagogy & assessment which suit the needs and aspirations of our students. We work towards a holistic, experiential, integrated, student-centered educational system that helps to improve the creativity, critical thinking, and problem-solving skills of our young learners to equip them for the ever-changing employment dynamics and global ecosystems. We educate our children to change the world through peace, empathy, and fraternity and place great emphasis on inner values.

At our school, we truly believe that "Every child is a star, and we know how to make that star shine." Each student is blessed with unique abilities, strengths, and learning styles. Our aim is to recognize these differences and prepare every child according to their individual abilities so they can become the very best version of themselves. We provide a balanced and supportive environment where students excel not only in academics but also in sports, drama, IT, and various co-curricular activities. By offering diverse learning opportunities, we help each child discover their interests, build confidence, and develop essential life skills.

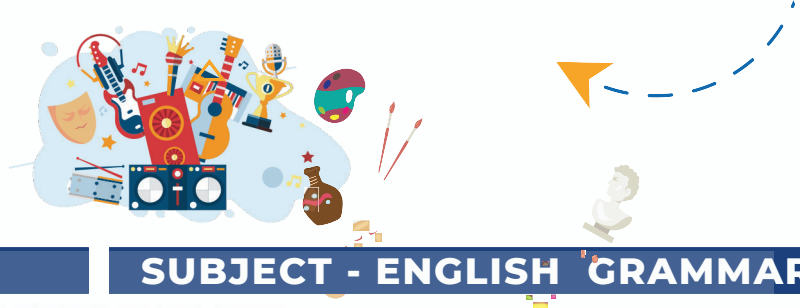
Our dedicated team of educators works closely with students to guide them, inspire them, and nurture their overall growth. We believe that when children are given the right direction, encouragement, and resources, they shine brightly in every field they choose.

Together, let us continue to support our children so they grow into confident, talented, and responsible individuals.

9TH CLASS FEES DETAIL

DETAIL	FEES	YEARLY AMOUNT
ADMISSION ONE TIME	10000	10000
TUTION FEES	5000	60000
BUS FEES	500	6000
LIBRARY	1000	12000
LAPTOP	60000	60000
BOOKS	10000	10000
COMPUTER CLASSES	12000	12000
GAME	12000	12000
TOTAL		1,82,000
FEES YEARLY WITH LAPTOP AND BOOK	SCHOLARS kit	50000
YEARLY FEES WITHOUT LAPTOP		35000

10th SYLLABUS HBSE



SUBJECT - ENGLISH

SUBJECT - ENGLISH GRAMMAR

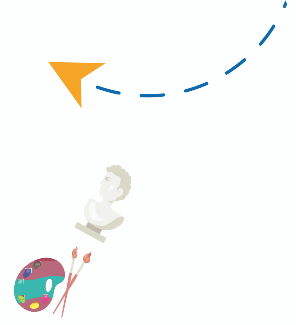
- **First Flight (Main Reader):**
- **Prose Chapters:**
 - a. **A Letter to God**
 - b. **Nelson Mandela: Long Walk to Freedom**
 - c. **Two Stories about Flying:**
 - **His First Flight**
 - **The Black Aeroplane**
 - d. **From the Diary of Anne Frank**
 - e. **Glimpses of India:**
 - **A Baker from Goa**
 - **Coorg**
 - **Tea from Assam**
 - f. **Mijbil the Otter**
 - g. **Madam Rides the Bus**
 - h. **The Sermon at Benares**
 - i. **The Proposal**
- **Poems:**
 - a. **Dust of Snow**
 - b. **Fire and Ice**
 - c. **A Tiger in the Zoo**
 - d. **How to Tell Wild Animals**
 - e. **The Ball Poem**
 - f. **Amanda!**
 - g. **The Trees**
 - h. **Fog**
 - i. **The Tale of Custard the Dragon**
 - j. **For Anne Gregory**
- **Footprints Without Feet (Supplementary Reader):**
 1. **A Triumph of Surgery**
 2. **The Thief's Story**
 3. **The Midnight Visitor**
 4. **A Question of Trust**
 5. **Footprints Without Feet**
 6. **The Making of a Scientist**
 7. **The Necklace**
 8. **Bholi**
 9. **The Book that Saved the Earth**

- **Grammar Topics:**
- **Punctuation Marks**
- **Articles**
- **Tenses**
- **Reported Speech**
- **Modals**
- **Simple, Compound & Complex Sentences**
- **Clauses (Noun, Adjective & Adverb)**
- **Non-Finites**
- **Idioms**
- **Phrasal Verbs**
- **Figures of Speech**
- **Writing Skills:**
- **Applications**
- **Letters**
- **Description of Events/Incidents**
- **Paragraph Writing**
- **Story Writing**
- **Report Writing**
- **Classified Advertisements**
- **Interviews**
- **Conversations**
- **Reading Skills:**
- **Unseen Passages**



10th SYLLABUS

SUBJECT - HINDI



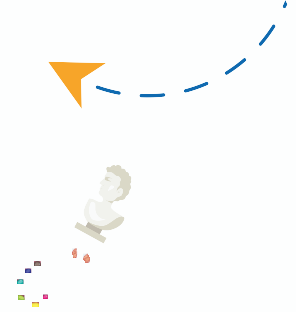
- क्षितिज भाग-2 (Kshitij Part-2):
- काव्य खंड (Poetry Section):
 - a. सूरदास – पद
 - b. तुलसीदास – राम-लक्ष्मण-परशुराम संवाद
 - c. जयशंकर प्रसाद – आत्मकथ्य
 - d. सूर्यकांत त्रिपाठी 'निराला' – उत्साह, अट नहीं रही है
 - e. नागार्जुन – बादल राग, फसल
 - f. मंगलेश डबराल – संगतकार
- गद्य खंड (Prose Section):
 - a. स्वयंप्रकाश – नेताजी का चश्मा
 - b. रामवृक्ष बेनीपुरी – बालगोबिन भगत
 - c. यशपाल – लखनवी अंदाज़
 - d. मन्नू भंडारी – एक कहानी यह भी
 - e. यतींद्र मिश्र – नौबतखाने में इबादत
 - f. भदंत आनंद कौसल्यायन – संस्कृत
- कृतिका भाग-2 (Kritika Part-2):
 - a. माता का आँचल
 - b. साना-साना हाथ जोड़ि
- आदर्श जीवन मूल्य (Madhyama):
 - a. आधार पक्का जीवन अच्छा
 - b. अच्छे गुणों से ही बनेगा जीवन अच्छा
 - c. सफलता के सूत्र
 - d. कर्म ही जीवन का आधार
 - e. समस्या को बदला अवसर में
 - f. प्रेरक प्रसंग
 - g. ज्ञान सभी को चाहिए
 - h. गरिमामयी भारतीय नारी
 - i. संकट में बुद्धिमानी

SUBJECT - HINDI GRAMMAR

- व्याकरण (Grammar):
- अलंकार, दोहा व चौपाई छंद, शब्द, पद, वाच्य, उपसर्ग-प्रत्यय, विलोम शब्द, पर्यायवाची शब्द, अनेकार्थी शब्द, मुहावरे, संधि, समास।
- रचनात्मक लेखन (Creative Writing):
- पत्र लेखन, निबंध लेखन।



Subject - Social science



- **History: Bharat and the World**
- **Unit 1:**
 - Sarasvati - Sindhu Civilization
 - Major Civilizations of the Ancient World
 - Major Philosophies of the World
- **Unit 2:**
 - Medieval Society: Europe and India
 - Christianity and Islam: Rise and Conflict
 - Foreign Invasions on India
- **Unit 3:**
 - Colonialism and Imperialism
 - Movement against British Colonialism in India
 - 50 Years of Independence
- **Political Science: Democratic Politics – II**
- **Unit 1:**
 - Power Sharing
 - Federalism
 - Gender, Religion, and Caste
- **Unit 2:**
 - Political Parties
 - Outcomes of Democracy
- **Geography: Contemporary India – II**
- **Unit 1:**
 - Resource and Development
 - Forest and Wildlife Resources
 - Water Resources
- **Unit 2:**
 - Agriculture
 - Mineral and Energy Resources
- **Unit 3:**
 - Major Ports: Kandla, Mumbai, Kochchi, Chennai, Vishakhapatnam, Kolkata
 - Major Airports: Amritsar (Raja Sansi – Sri Guru Ramdas Ji), Delhi (Indira Gandhi), Mumbai (Chhatrapati Shivaji), Chennai (Meenam Bakkam), Kolkata (Netaji Subhash Chandra Bose)
- **Economics: Understanding Economic Development**
- **Unit 1:**
 - Development
 - Sectors of the Indian Economy
- **Unit 2:**
 - Money and Credit
 - Globalization and the Indian Economy





From School to Competitive Level

MATHEMATICS

Part-A

Class 10



With Theory and Solved Examples

SELF STUDY



Detailed Solutions

NCERT EXERCISE



Separate Sections For School Level Concepts and Exercise

CBSE LEVEL



Separate Sections for Competitive level Concepts and Exercise

COMPETITIVE LEVEL

CONTENTS

1. Real Numbers1-38	
❖ School Level..... 1	
❖ Summary..... 5	
❖ NCERT Exercise..... 6	
❖ Quick Recall 9	
❖ Multiple Choice Questions 10	
❖ Subjective Questions 10	
❖ Competitive Level 13	
❖ Excluded from NCERT..... 22	
❖ Multiple Choice Questions 25	
❖ Competitive Corner 27	
❖ Explanations 30	
2. Polynomials.....39-77	
❖ School Level..... 39	
❖ Summary..... 48	
❖ NCERT Exercise..... 49	
❖ Quick Recall 51	
❖ Multiple Choice Questions 53	
❖ Subjective Questions 54	
❖ Competitive Level 56	
❖ Excluded from NCERT..... 61	
❖ Multiple Choice Questions 66	
❖ Competitive Corner 67	
❖ Explanations 69	
3. Pair of Linear Equations in Two Variables..... 78-144	
❖ School Level 78	
❖ Summary..... 86	
❖ NCERT Exercise..... 87	
❖ Quick Recall 97	
❖ Multiple Choice Questions 98	
❖ Subjective Questions 100	
❖ Competitive Level 103	
❖ Excluded from NCERT..... 112	
❖ Multiple Choice Questions 125	
❖ Competitive Corner 127	
❖ Explanations 129	
4. Quadratic Equations145-193	
❖ School Level..... 145	
❖ Summary..... 152	
❖ NCERT Exercise..... 154	
❖ Quick Recall 159	
❖ Multiple Choice Questions 160	
❖ Subjective Questions 162	
❖ Competitive Level 165	
❖ Excluded from NCERT..... 171	
❖ Word Problem..... 175	
❖ Multiple Choice Questions 177	
❖ Competitive Corner 179	
❖ Explanations 181	

5. Arithmetic Progressions.....194-251	❖ Competitive Level281
❖ School Level 194	❖ Excluded from NCERT.....287
❖ Summary.....200	❖ Multiple Choice Questions300
❖ NCERT Exercise.....201	❖ Competitive Corner302
❖ Quick Recall223	❖ Explanations305
❖ Multiple Choice Questions224	7. Coordinate Geometry316-381
❖ Subjective Questions226	❖ School Level316
❖ Competitive Level229	❖ Summary.....326
❖ Multiple Choice Questions233	❖ NCERT Exercise.....327
❖ Competitive Corner234	❖ Quick Recall334
❖ Explanations237	❖ Multiple Choice Questions335
6. Triangles.....252-315	❖ Subjective Questions336
❖ School Level252	❖ Competitive Level339
❖ Summary.....264	❖ Excluded from NCERT.....345
❖ NCERT Exercise.....265	❖ Multiple Choice Questions352
❖ Quick Recall275	❖ Competitive Corner354
❖ Multiple Choice Questions276	❖ Explanations358
❖ Subjective Questions277	

MATHEMATICS

Part-A

Class 10



CONTENTS

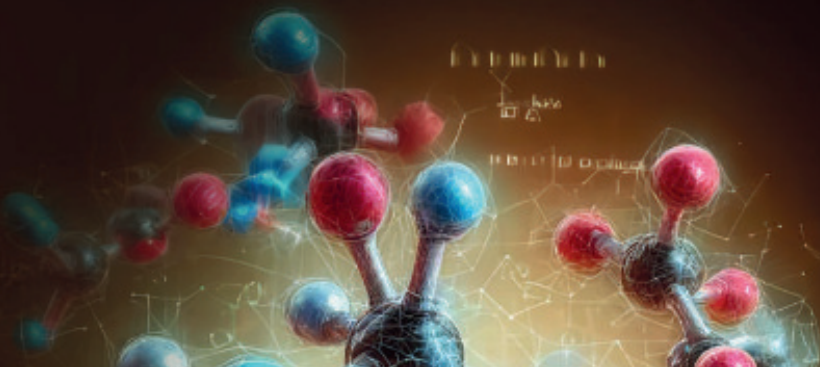
8. Introduction to Trigonometry1-52	10. Circle102-149
❖ School Level..... 1	❖ School Level..... 102
❖ Summary..... 10	❖ Summary..... 107
❖ NCERT Exercise 11	❖ NCERT Exercise 108
❖ Quick Recall..... 22	❖ Quick Recall..... 113
❖ Multiple Choice Questions..... 23	❖ Multiple Choice Questions..... 114
❖ Subjective Questions 24	❖ Subjective Questions 115
❖ Competitive Level 27	❖ Competitive Level 119
❖ Excluded from NCERT 34	❖ Multiple Choice Questions..... 128
❖ Multiple Choice Questions..... 35	❖ Competitive Corner 131
❖ Competitive Corner 36	❖ Explanations 133
❖ Explanations 39	11. Areas Related to Circles150-199
9. Some Applications of Trigonometry53-101	❖ School Level..... 150
❖ School Level..... 53	❖ Summary..... 157
❖ Summary..... 58	❖ NCERT Exercise 158
❖ NCERT Exercise 58	❖ Quick Recall..... 162
❖ Quick Recall..... 64	❖ Multiple Choice Questions..... 164
❖ Multiple Choice Questions..... 66	❖ Subjective Questions 165
❖ Subjective Questions 68	❖ Competitive Level 169
❖ Competitive Level 72	❖ Excluded from NCERT 170
❖ Multiple Choice Questions..... 72	❖ Multiple Choice Questions..... 177
❖ Competitive Corner 74	❖ Competitive Corner 179
❖ Explanations 77	❖ Explanations 182

12. Surface Areas and Volumes.....	200-239
❖ School Level.....	200
❖ Summary.....	206
❖ NCERT Exercise	207
❖ Quick Recall	213
❖ Multiple Choice Questions.....	215
❖ Subjective Questions	216
❖ Competitive Level	220
❖ Excluded from NCERT	221
❖ Multiple Choice Questions.....	229
❖ Competitive Corner	230
❖ Explanations	231
13. Statistics	240-297
❖ School Level.....	240
❖ Summary.....	252
❖ NCERT Exercise	253
❖ Quick Recall	268
❖ Multiple Choice Questions.....	269

❖ Subjective Questions	270
❖ Competitive Level	275
❖ Excluded from NCERT	277
❖ Multiple Choice Questions.....	280
❖ Competitive Corner	282
❖ Explanations	284
14. Probability.....	298-328
❖ School Level.....	298
❖ Summary.....	302
❖ NCERT Exercise	303
❖ Quick Recall	308
❖ Multiple Choice Questions.....	309
❖ Subjective Questions	311
❖ Competitive Level	314
❖ Excluded from NCERT	314
❖ Multiple Choice Questions.....	316
❖ Competitive Corner	317
❖ Explanations	319

CHEMISTRY

Class 10



CONTENTS

1. Chemical Reactions and

Equations.....1-40

❖ School Level	1
❖ Summary	11
❖ NCERT Corner.....	13
❖ NCERT Exercise.....	14
❖ Quick Recall.....	16
❖ Multiple Choice Questions	18
❖ Subjective Questions.....	19
❖ Competitive Level.....	24
❖ Multiple Choice Questions	28
❖ Competitive Corner.....	31
❖ Explanations	36

2. Acids, Bases and Salts.....41-82

❖ School Level	41
❖ Summary	56
❖ NCERT Corner.....	58
❖ NCERT Exercise.....	60
❖ Quick Recall.....	62
❖ Multiple Choice Questions	64
❖ Subjective Questions.....	65
❖ Competitive Level.....	67
❖ Multiple Choice Questions	74
❖ Competitive Corner.....	76
❖ Explanations	79

3. Metals and Non-metals..... 83-125

❖ School Level	83
❖ Summary	96
❖ NCERT Corner.....	98
❖ NCERT Exercise.....	100
❖ Quick Recall.....	102
❖ Multiple Choice Questions	104

❖ Subjective Questions.....	105
❖ Competitive Level.....	109
❖ Multiple Choice Questions	115
❖ Competitive Corner.....	117
❖ Explanations	120

4. Carbon and its Compounds.....126-173

❖ School Level	126
❖ Summary	146
❖ NCERT Corner.....	148
❖ NCERT Exercise.....	150
❖ Quick Recall.....	151
❖ Multiple Choice Questions	153
❖ Subjective Questions.....	154
❖ Competitive Level.....	157
❖ Multiple Choice Questions	163
❖ Competitive Corner.....	165
❖ Explanations	168

5. Periodic Classification

of Elements174-213

❖ School Level	174
❖ Summary	184
❖ NCERT Corner.....	186
❖ NCERT Exercise.....	188
❖ Quick Recall.....	189
❖ Multiple Choice Questions	191
❖ Subjective Questions.....	192
❖ Competitive Level.....	197
❖ Multiple Choice Questions	201
❖ Competitive Corner.....	203
❖ Explanations	208

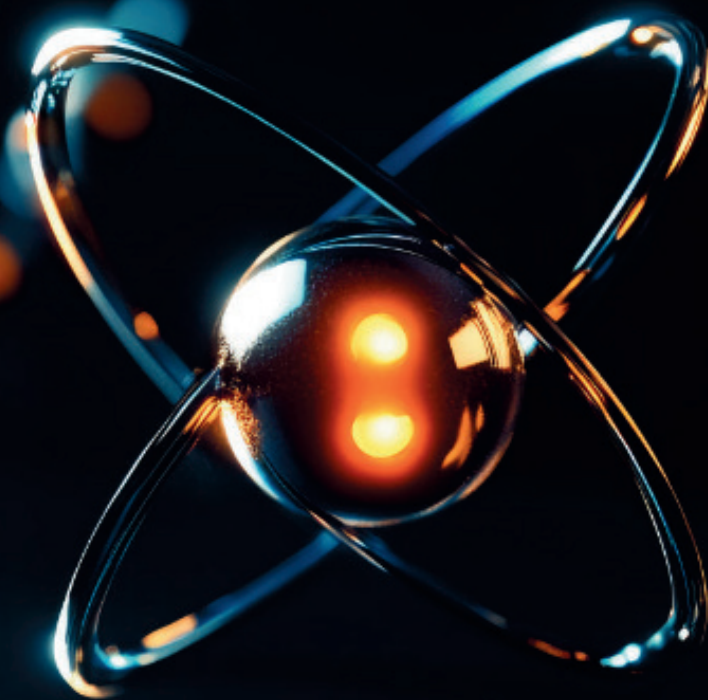
Glossary.....214-216



From School to Competitive Level

PHYSICS

Class 10



With Theory and Solved Examples

SELF STUDY



Detailed Solutions

NCERT EXERCISE



Separate Sections For School Level Concepts and Exercise

CBSE LEVEL



Separate Sections for Competitive level Concepts and Exercise

COMPETITIVE LEVEL

CONTENTS

1. Light-Reflection and Refraction.....1-58

- ❖ School Level..... 1
- ❖ Summary.....20
- ❖ NCERT Corner21
- ❖ NCERT Exercise24
- ❖ Quick Recall.....27
- ❖ Multiple Choice Questions.....30
- ❖ Subjective Questions31
- ❖ Competitive Level36
- ❖ Multiple Choice Questions.....39
- ❖ Competitive Corner42
- ❖ Explanations49

2. Human Eye and the Colourful World59-98

- ❖ School Level..... 59
- ❖ Summary.....70
- ❖ NCERT Corner71
- ❖ NCERT Exercise72
- ❖ Quick Recall.....74
- ❖ Multiple Choice Questions.....76
- ❖ Subjective Questions77
- ❖ Competitive Level81
- ❖ Multiple Choice Questions.....87
- ❖ Competitive Corner89
- ❖ Explanations93

3. Electricity99-149

- ❖ School Level.....99
- ❖ Summary.....109

- ❖ NCERT Corner 110
- ❖ NCERT Exercise 114
- ❖ Quick Recall..... 118
- ❖ Multiple Choice Questions..... 121
- ❖ Subjective Questions 122
- ❖ Competitive Level 127
- ❖ Multiple Choice Questions..... 136
- ❖ Competitive Corner 138
- ❖ Explanations 143

4. Magnetic Effects of Electric Current.....150-189

- ❖ School Level..... 150
- ❖ Summary..... 157
- ❖ NCERT Corner 157
- ❖ NCERT Exercise 159
- ❖ Quick Recall..... 160
- ❖ Multiple Choice Questions..... 162
- ❖ Subjective Questions 163
- ❖ Competitive Level 166
- ❖ Multiple Choice Questions..... 173
- ❖ Competitive Corner 176
- ❖ Explanations 182

Glossary.....190-198



From School to Competitive Level

BIOLOGY

Class 10



With Theory and Solved Examples

SELF STUDY



Detailed Solutions

NCERT EXERCISE



Separate Sections For School Level Concepts and Exercise

CBSE LEVEL



Separate Sections for Competitive level Concepts and Exercise

COMPETITIVE LEVEL

CONTENTS

1. The Fundamental Unit of Life1-49	4. Why do we fall ill?.....135-169
❖ School Level..... 1	❖ School Level..... 135
❖ Summary..... 18	❖ Summary..... 151
❖ NCERT Corner 19	❖ NCERT Corner 152
❖ NCERT Exercise 20	❖ NCERT Exercise 154
❖ Quick Recall 21	❖ Quick Recall 155
❖ Multiple Choice Questions..... 24	❖ Multiple Choice Questions..... 157
❖ Subjective Questions 25	❖ Subjective Questions 159
❖ Competitive Level 28	❖ Competitive Level 161
❖ Multiple Choice Questions..... 39	❖ Multiple Choice Questions..... 163
❖ Competitive Corner 40	❖ Competitive Corner 164
❖ Explanations 44	❖ Explanations 166
2. Tissues50-87	5. Natural Resources170-209
❖ School Level..... 50	❖ School Level..... 170
❖ Summary..... 65	❖ Summary..... 189
❖ NCERT Corner 66	❖ NCERT Corner 190
❖ NCERT Exercise 67	❖ NCERT Exercise 191
❖ Quick Recall..... 69	❖ Quick Recall 192
❖ Multiple Choice Questions..... 71	❖ Multiple Choice Questions..... 194
❖ Subjective Questions 73	❖ Subjective Questions 197
❖ Competitive Level 76	❖ Competitive Level 200
❖ Multiple Choice Questions..... 81	❖ Multiple Choice Questions..... 202
❖ Competitive Corner 82	❖ Competitive Corner 203
❖ Explanations 84	❖ Explanations 205
3. Diversity in Living Organisms..... 88-133	6. Improvement in Food Resources ...210-242
❖ School Level..... 88	❖ School Level..... 210
❖ Summary..... 110	❖ Summary..... 222
❖ NCERT Corner 111	❖ NCERT Corner 223
❖ NCERT Exercise 113	❖ NCERT Exercise 225
❖ Quick Recall..... 114	❖ Quick Recall 227
❖ Multiple Choice Questions..... 117	❖ Multiple Choice Questions..... 229
❖ Subjective Questions 120	❖ Subjective Questions 230
❖ Competitive Level 123	❖ Competitive Level 233
❖ Multiple Choice Questions..... 127	❖ Multiple Choice Questions..... 236
❖ Competitive Corner 128	❖ Competitive Corner 238
❖ Explanations 130	❖ Explanations 239



TEST SERIES AND PLANNER

- ✓ 50% syllabus completed before June
- ✓ 70% syllabus completed before September Half-Yearly Exam
- ✓ 100% syllabus completed before 1 December 2026



17 MONTH-WISE MASTER ACADEMIC PLANNER

● APRIL 2026 – FOUNDATION PHASE

📖 MATHEMATICS

- Real Numbers
- Polynomials

🔬 PHYSICS

- Light – Reflection & Refraction

🧪 CHEMISTRY

- Chemical Reactions & Equations

🧬 BIOLOGY

- Life Processes (Nutrition, Respiration)
- Management of Natural Resources

● MAY 2026 – 50% SYLLABUS TARGET

📖 MATHEMATICS

- Pair of Linear Equations in Two Variables
- Quadratic Equations (Introduction & solving methods)

🔬 PHYSICS

- Human Eye & the Colourful World

🧪 CHEMISTRY

- Acids, Bases and Salts

🧬 BIOLOGY

- Life Processes (Transportation & Excretion)
- Control and Coordination

📌 By 31 May:

✅ 50% Maths + Science syllabus completed

🎯 TARGET ACHIEVED BEFORE JUNE ✅

● JULY 2026

📖 MATHEMATICS

- Quadratic Equations (word problems)
- Arithmetic Progressions

🔬 PHYSICS

- Electricity

🧪 CHEMISTRY

- Metals and Non-metals

🧬 BIOLOGY

- How do Organisms Reproduce
- Environment

📌 Unit tests conducted

● AUGUST 2026 – 70% SYLLABUS TARGET

📖 MATHEMATICS

- Triangles
- Coordinate Geometry

🔬 PHYSICS

- Magnetic Effects of Electric Current

🧪 CHEMISTRY

- Carbon and its Compounds

🧬 BIOLOGY

- Heredity and Evolution

📌 By 31 August:

✅ 70% syllabus completed

➡ Biology = 100% complete

🎯 70%+ SYLLABUS READY FOR HALF-YEARLY EXAM ✅

📖 SEPTEMBER 2026 – HALF-YEARLY EXAM

Exam Syllabus

- Maths: Chapters 1–9
- Physics: All chapters
- Chemistry: All chapters
- Biology: All chapters
- Error analysis & doubt clearing





TEST SERIES AND PLANNER

- ✓ 50% syllabus completed before June
- ✓ 70% syllabus completed before September Half-Yearly Exam
- ✓ 100% syllabus completed before 1 December 2026



● OCTOBER 2026

📖 MATHEMATICS

- Circles
- Constructions

WS1

WS2

🧪 CHEMISTRY

- Environment (as per board syllabus)

WS3

📌 Chapter-wise tests

● NOVEMBER 2026 – FINAL COMPLETION

📖 MATHEMATICS

- Surface Areas & Volumes
- Statistics
- Probability

📌 100% syllabus completed before 1 December

● DECEMBER 2026 – JANUARY 2027 (REVISION PHASE)

- Full syllabus revision
- Subject-wise tests
- Weak-area improvement
- HOTS & NEEV-level MCQs

● FEBRUARY 2027 (FINAL PREPARATION)

- Grand Tests (Full syllabus)
- Time-management practice
- Final annual exam readines



Date	Subject	CHAPTERS
10 April	Mathematics	Real Numbers
17 April	Physics	Light – Reflection & Refraction
24 April	Chemistry	Chemical Reactions & Equations
30 April	Biology	Life Processes (Nutrition & Respiration)
Date	Subject	Syllabus
7 May	Mathematics	Polynomials
14 May	Mathematics	Linear Equations (2 variables)
18 May	Biology	Life Processes + Control & Coordination
22 May	Chemistry	Acids, Bases & Salts
28 May	Physics	Human Eye & Colourful World
Date	Subject	Syllabus
10 July	Mathematics	Quadratic Equations
17 July	Physics	Electricity



21 July	Chemistry	Metals & Non-metals
25 July	Biology	How do Organisms Reproduce
30 July	Mathematics	Arithmetic Progressions
6 Aug	Mathematics	Triangles
13 Aug	Mathematics	Coordinate Geometry
18 Aug	Physics	Magnetic Effects of Electric Current
22 Aug	Chemistry	Carbon & Its Compounds
27 Aug	Biology	Heredity & Evolution
Date	Subject	Syllabus
1 Oct	Physics	Sources of Energy
5 Oct	Chemistry	Environment
7 Oct	Biology	Environment
10 Oct	Physics	Electricity (Revision)
13 Oct	Chemistry	Metals & Non-metals (Rev)
16 Oct	Biology	Heredity & Evolution (Rev)

19 Oct	Physics	Magnetism (Rev)
22 Oct	Chemistry	Carbon Compounds (Rev)
26 Oct	Biology	Life Processes (Rev)
28 Oct	Science Cumulative-I	Science Cumulative-I
6 Oct	MATH	Circles
14 Oct	MATH WS1	Constructions
24 Oct	MATH WS2 WS3	Surface Areas & Volumes
2 Nov	Physics	Light + Electricity
4 Nov	Chemistry	Reactions + Acids
7 Nov	Biology	Control & Coordination
10 Nov	Physics	Numericals
13 Nov	Chemistry	Metals + Carbon
16 Nov	Biology	Reproduction
19 Nov	Physics	Full Physics Rev
23 Nov	Chemistry	Full Chem Rev
25 Nov	Biology	Full Bio Rev

28 Nov	Full Science Test		
5 Nov	Statistics		
12 Nov	Probability		
21 Nov	Full Maths Syllabus-I		
Date	Syllabus / Focus	– Date	Maths Syllabus
1 Dec	Physics – Electricity	WS1 WS2 WS3 1 Dec	Real Numbers
4 Dec	Chemistry – Chemical Reactions	4 Dec	Polynomials
7 Dec	Biology – Life Processes	– 7 Dec	Linear Equations (Pair)
10 Dec	Physics – Magnetism	10 Dec	Quadratic Equations
14 Dec	Chemistry – Acids, Bases & Salts	14 Dec	Arithmetic Progressions
16 Dec	Biology – Control & Coordination	16 Dec	Triangles
19 Dec	Physics – Light (Revision)	19 Dec	Coordinate Geometry
22 Dec	Chemistry – Metals & Non-metals	22 Dec	Circles
26 Dec	Biology – Reproduction	26 Dec	Constructions + Polygons

28 Dec	Chemistry – Carbon & Compounds	28 Dec	Surface Areas & Volumes
31 Dec	Full Science Test-I	31 Dec	Full Maths Test-I
16 Jan	Physics – Electricity + Magnetism	16 Jan	Algebra Revision
19 Jan	Chemistry – Reactions + Acids	19 Jan	Geometry Revision
22 Jan	Biology – Life Processes	– WS1	Trigonometric Ratios
25 Jan	Physics – Numericals	WS2 WS3	Trigonometric Identities
28 Jan	Chemistry – Carbon & Metals	28 Jan	Statistics
30 Jan	Pre-Board Science Test	–	Pre-Board Maths Test
3 Feb	Full Physics Test	3 Feb	Full Algebra Test
6 Feb	Full Chemistry Test	6 Feb	Full Geometry Test
9 Feb	Full Biology Test	9 Feb	Trigonometry + Heights & Distances
12 Feb	Mixed MCQ + Case-Based	12 Feb	Statistics + Probability
15 Feb	HOTS & Numericals	15 Feb	HOTS + Case-Based
18 Feb	Full Syllabus Test-II	18 Feb	Full Syllabus Test-II
22 Feb	Final Revision Test	22 Feb	Final Revision Test

EXAM SCHEDULE FOR Class 10TH & 12th

✉ shaheedbhagatsingh1289@gmail.com

☎ 7988762959



Exam	DATE	DAY	10th	12th
Periodic Test 1	21.07.26	Tuesday	ENG	ENG
	23.07.26	Thursday	HINDI	HINDI
	25.07.26	Saturday	MATH	MATH
	27.07.26	Monday	SCI	PHY
	30.07.26	Thursday	S.S	CHE
HALF YEARLY EXAMINATION	15.09.26	Tuesday	ENG	ENG
	17.09.26	Thursday	HINDI	HINDI
	19.09.26	Saturday	MATH	MATH
	21.09.26	Monday	SCI	PHY
	24.09.26	Thursday	S.S	CHE
	26.09.26	Saturday	MUSIC	

- . Periodic Tests will be conducted during regular school timings.
- . School Timings during Periodic Tests will be notified separately.
- . Retests will not be conducted for any reason. Half day leave or leave after exam is not permitted.
- . Any change in schedule will be communicated in advance to the parents through SMS/Website/Circular.



SYNOPSIS OF ASSESSMENT

1	Periodic Assessment (20 marks each in Term-I & Term-II)	M.M	Weightage
(a)	Periodic test (july)	30	10
(b)	Internal assessment (Once in Term-I & Term-II separately)	10	5
(c)	Manners and dressing (Once in Term-I & Term-II separately)	10	5
(d)	Half Yearly Examination (In September)	80	80
(e)	pre board 1 and 2 (In December & Feb)	80	80

Course Grading




100% - 90% = A
 89% - 80% = B
 79% - 70% = C
 69% - 60% = D
 59% - 50% = F

- . Periodic Tests will be conducted during regular school timings.
- . School Timings during Periodic Tests will be notified separately.
- . Retests will not be conducted for any reason. Half day leave or leave after exam is not permitted.
- . Any change in schedule will be communicated in advance to the parents through SMS/Website/Circular.

PROMOTION AND ASSESSMENT POLICY

PROMOTION AND ASSESSMENT POLICY

- 
- **Periodical Test : 65 PERCENT OF SYLLABUS WILL BE COVERED IN P.T 1**
 - **75 PERCENT SYLLABUS WILL BE COVERED IN HALF YEARLY EXAMINATION**
 - **100 PERCENT SYLLABUS WILL BE COVERED IN PRE BOARD 1,2**
 - ***Any change in schedule will be communicated in advance to parents through SMS Circular***
 - **Subject - ENG, HINDI , MATH , SCIENCE , S.S , MUSIC , COMPUTER**
 - Thus, Term-I: 100 marks (Worksheet assessment-10 marks +Note Book-5 marks + manners and dressing-5 marks + HY-80 marks)
 - Term-II:100 marks (Worksheet assessment-10 marks + Note Book-5 marks + manners and dressing 5 marks+ AE-80 marks)
 - Child needs to secure 33% in Half Yearly and Yearly / Annual Exam separately (i.e., 26.4 out of 80) to pass in a particular subject. To get passed and promoted to next class, child has to secure 33% in each subject.
 - If a child secures E-grade (below 33%) in Half Yearly and Annual Examination in a particular subject, then he/she can be given ONE opportunity to IMPROVE his/her performance in Half Yearly & Annual Exam separately based on the syllabus meant for Term-I & Term-II respectively. There is only ONE ATTEMPT to qualify the Improvement Exam.
 - **Rule of examination**
 - 75 % attendance
 - 33% passing marks
 - **Compartment Exam will comprise of entire syllabus of a particular subject and will be tentatively in the month of June. There is only **ONE ATTEMPT for qualifying the Compartment Exam.** Students will be detained if they fail to pass the Compartment Exam. There won't be any Second Compartment Exam under any circumstances and reasons (medical or otherwise).**

**Remember
this**



Be confident!



Be curious!



Be persistent!



Be engaged!



SHAHEED BHAGAT SINGH SR SEC SCHOOL

CLASS 10 RESULT

TOTAL STUDENT 26
100 PERCENT RESULT 17 MERIT



SHAURYA
98%



VANSHIKA
97%



VIVEK
95%



NANCY
91%



DIPEEKA
90%



RONAK
90%



NAITEEK
90%



ISHU
90%



KAJAL
89%



SAKSHI
87%



PRINCE
86%



KHUSHI
85%



PARRTEEK
83%



SAMEER
82%



SEENU
80%



SHUBHAM
77%



SAMIT
75%

ADMISSION CALL



JHAMOLA (JIND)



9416339698



SHAHEED BHAGAT SINGH SR SEC SCHOOL (JHAMOLA)



SCHOLARS KIT SPECIAL FOR 11TH AND 12TH NEET/ JEE STUDENT



FEATURES

- EXPERT FACULTY
- LAPTOP
- LIBRARY(8A.M-5P.M)
- NEET /JEE MODULE
- TEST SERIES
- ADMISSION
- VECHILE
- TUTION FEES
- DOUBT CLASSES
- PHY,CHE,BIO LAB.

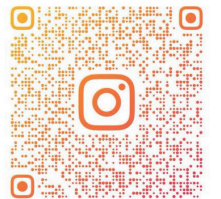
**SCHOLARS KIT IS FOR SELF LEARNER
AND STUDIOUS**



**CONTACT US FOR COMPLETE YEAR
PLANNER AND FEES DETAIL**



7988762959



@SHAHEEDBHAGATSINGHSRSEC.SCHOOL

CLASS - NURSERY TO 12TH (MEDICAL AND NON MEDICAL)